

# MailScan for Linux Features

MailScan for Linux is a reliable web based 'Real-Time' mail scanning Software for Linux Mail Servers and performs Spam filtering and virus scanning. It offers a complete and secure security solution for mail servers running on Linux. Some of the Linux mail servers that it protects are: SendMail, Qmail, Exim, PostFix, etc.

With the increased penetration of Linux as an alternate operating system for mail servers, attacks on Linux based mail servers has increased. About 90% of the viruses today enter the organizations via Internet emails.

The only solution is to provide content security or, in a broader sense, security plug-ins, at the gateway level and most importantly, everything has to be on a "Real-Time" basis. MailScan for Linux is delivers all these functions. It provides a comprehensive virus, harmful-carrier and content security. It stops these threats before they arrive on to the company's network.

MailScan for Linux acts works as a Content-Security and Anti-Virus Software for your Corporate Mail Server. It scans and cleans e-mails that:

- A) Flow between all the local users.
- B) Are sent from your Mail Server to the Internet
- C) Come into your Mail Server from the Internet (either via SMTP).

- All mails pass through MailScan that ensures security and delivery of messages.
- MailScan works on "TCP-IP Port level" and hence does not require an additional machine to act like a gateway. MailScan for Linux is based on highly optimized open source and in-house developed software's.
- MailScan for Linux being a gateway, all the mails pass through MailScan where the following functions are performed:
  - Scanning all the e-mails for viruses before letting them through the gateway.
  - SPAM control by checking the validity of the mail senders and their IP-Addresses (available in MailScan for Linux).
- MailScan for Linux performs virus and content scanning at the gateway and then delivers the mail to the user mailboxes.

## Anti Spam Features

### WHITE LISTS

MailScan for Linux allows you to create a White List of clean domains and users. In addition there is a list of 'Spam phrases'. Mails with such phrases should be blocked. The software allows

you to apply a severity level to the phrases from low to high. This allows you to control how Spam is identified.

Figure 1 shows a screen from MailScan for Linux, the top selling Anti Virus and Anti Spam software with features of White Lists and Spam Phrases.

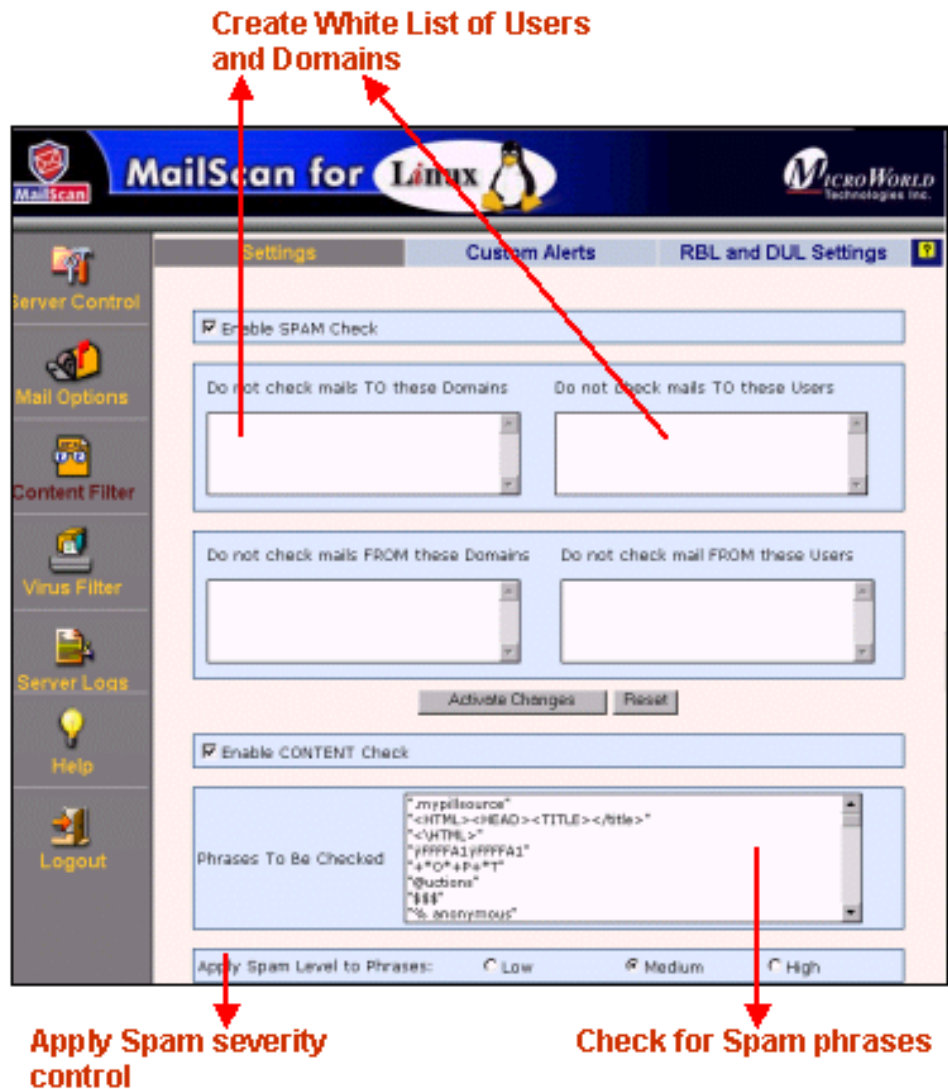


Figure 1. White Lists and Spam Phrases

## RBL AND DUL CONTROLS

MailScan for Linux have a list of RBL and DUL to verify a users authenticity.

MAPS (Mail Abuse Prevention System) provides a list of IP addresses that are known Spammers or allow spamming. This list is called as **Black hole list**. When your server, receives a mail from a domain, not on its allow domain list, you can send a query to MAPS Server which verifies the IP.

Spammers sometimes use stealth mail tactics when their initial Spam attempts are blocked. They use a **Dial-Up-Service (DUL)** provider to connect their Spam mail service, to the server. This is

trespassing on your MailServer and the MAPS DUL project helps in identifying and stopping Spam. The project has a list of DUL users who are known Spammers. To verify if the request for connection to your Server is genuine, you can send a query to dialups.mail-abuse.org. The request is verified and returned.

Figure 2 shows a screen from MailScan for Linux, the top selling Anti-Virus and Spam software for Linux mail servers with features of RBL and DUL.

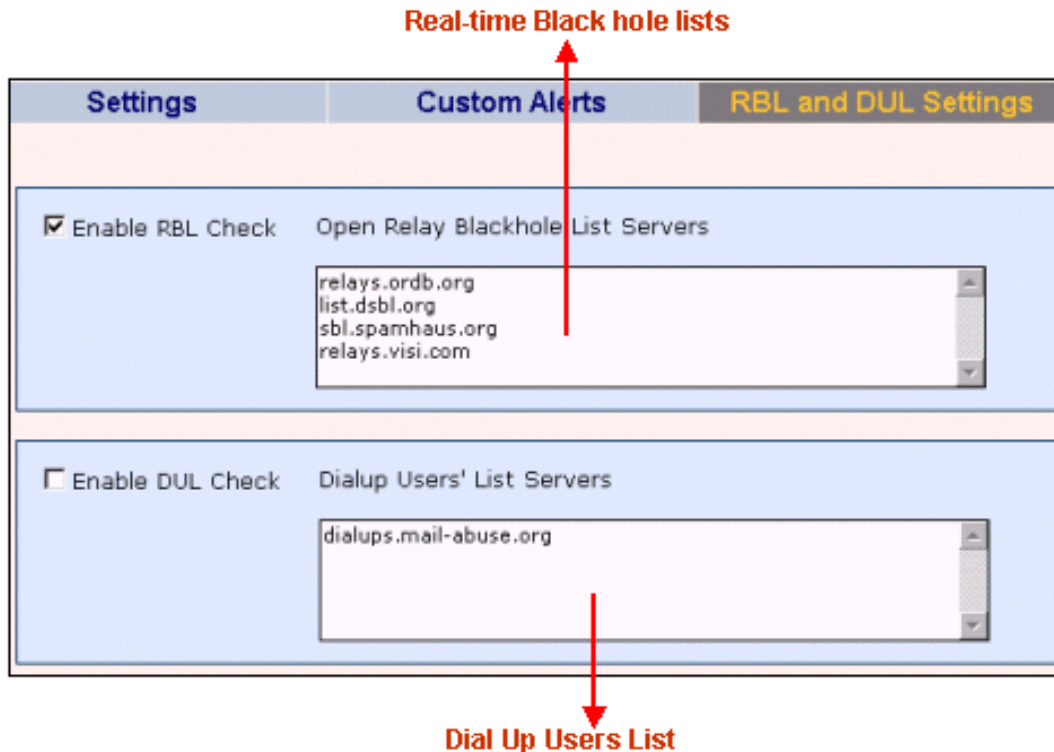


Figure 2 RBL and DUL features

## BLOCK SPAMMER WITH BLACK LISTING

Another way to beat a Spam is to refuse entry to e-mail IDs and Domains that are known Spammers. MailScan for Linux allows you to create a Black List of such users and domains. Software with the following features effectively combats Spam.

- Add e-mail ID of known Spammer to the block list. Any mails received from an ID, included in the list are automatically deleted, without being downloaded into your server.
- Add domains of known Spammers to the black list. Any mails received from such domains are automatically blocked, without being downloaded into your server.

Figure 3 shows a screen with from MailScan for Linux, the top selling Anti Virus and Anti Spam software, with features to create Black lists.

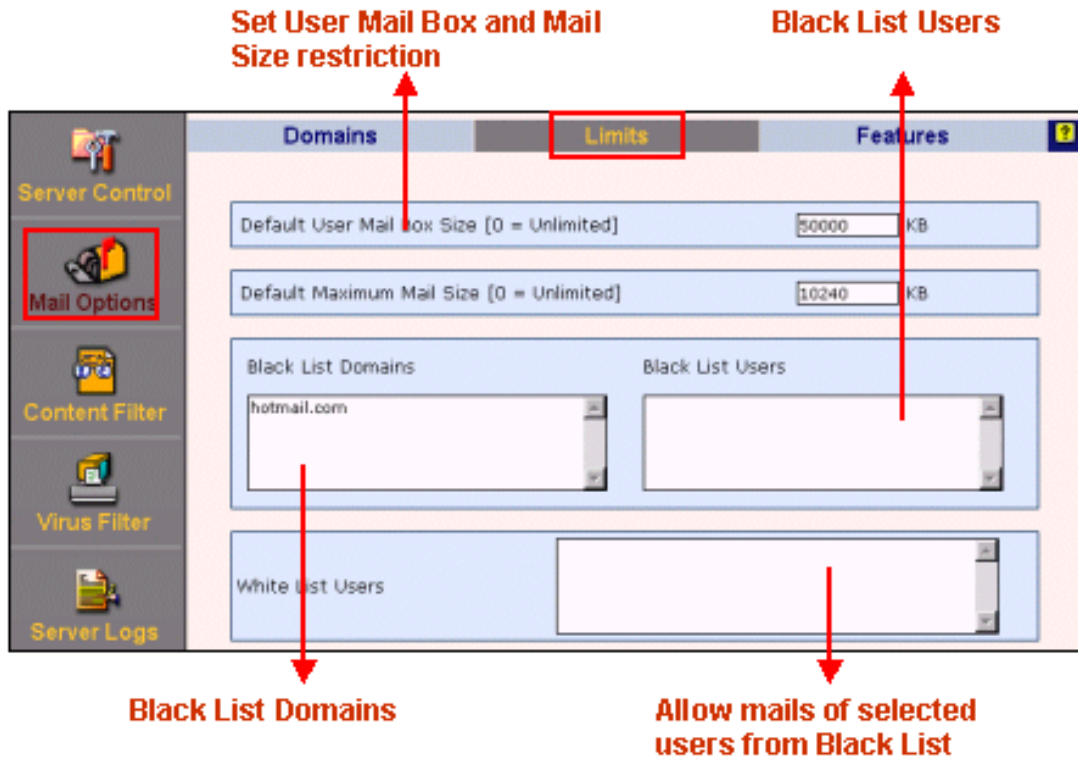


Figure 3 Black List of Users and Domains

## DELETE SPAM, INFECTED AND UNDELIVERABLE MAILS

After a mail is identified as Spam or infected it is important that such mails be deleted. Mails that are undeliverable due to unresolved addresses should also be deleted. MailScan for Linux allows you to view brief details of such mails and delete them.

Figure 4 shows a screen from MailScan for Linux with features to delete Spam and infected mails.

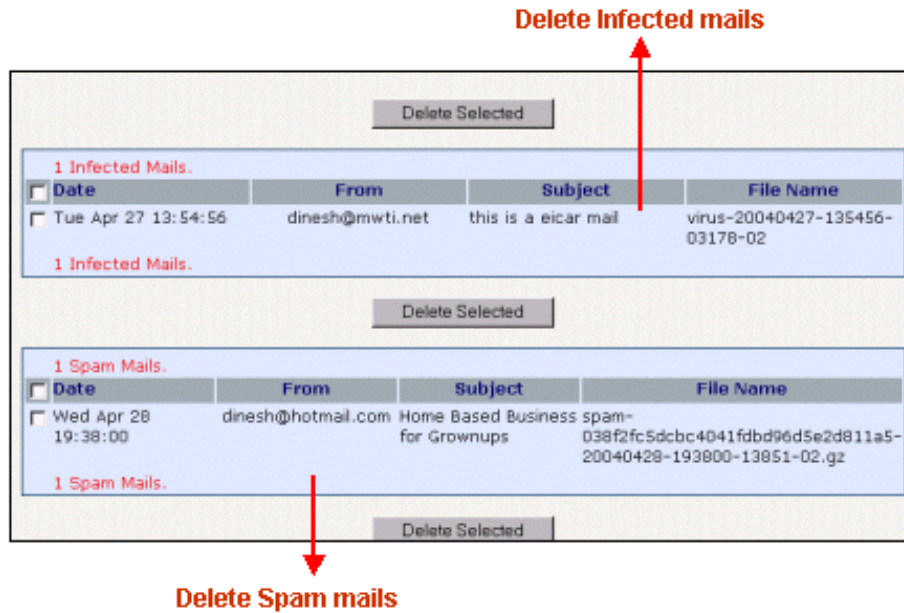


Figure 4 Delete Spam and infected mails

## Anti Virus Features

MailScan for Linux has robust anti virus features as explained next.

### VIRUS DEFINITION UPDATES

Every day sees new viruses appearing. Updates are vaccines that detect and remove new viruses. The software must have the means to identify new viruses and remove them. Updates are available as free down loads on our mirror download. MailScan for Linux can be configured to connect automatically and download updates from updates download sites.

You can also set a daily schedule to automatically download updates at a set time

Figure 5 shows a screen with from MailScan for Linux, the top selling Anti Virus and Anti Spam software, with features to automatically download updates.

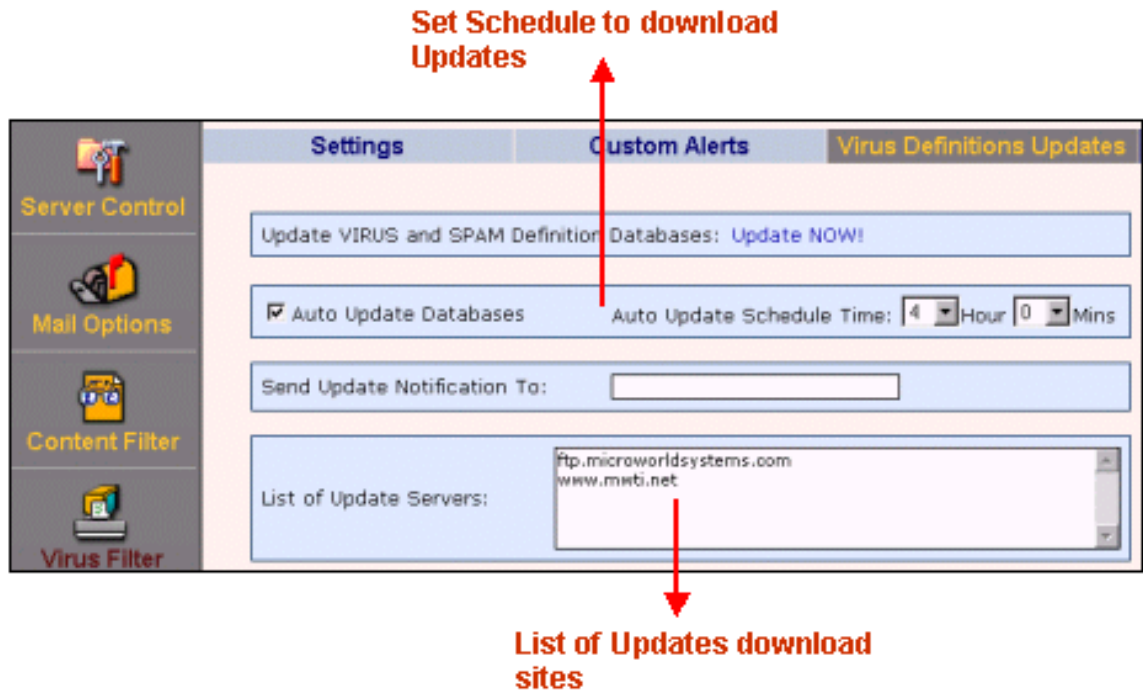


Figure 5 Download Updates

**BLOCK SPECIFIC ATTACHMENT TYPES**

Some types of attachments are used as virus carrier files. MailScan for Linux allows you to specify such attachment types and these are automatically blocked. This feature can also be used to stop confidential data being mailed as attachments.

Another feature is a white list of users and domains to whom mails can be sent without scanning. This feature removes double scanning and increases mail delivery speed.

Figure 6 shows a screen with from MailScan for Linux, the top selling Anti Virus and Anti Spam software, with features to automatically download updates.

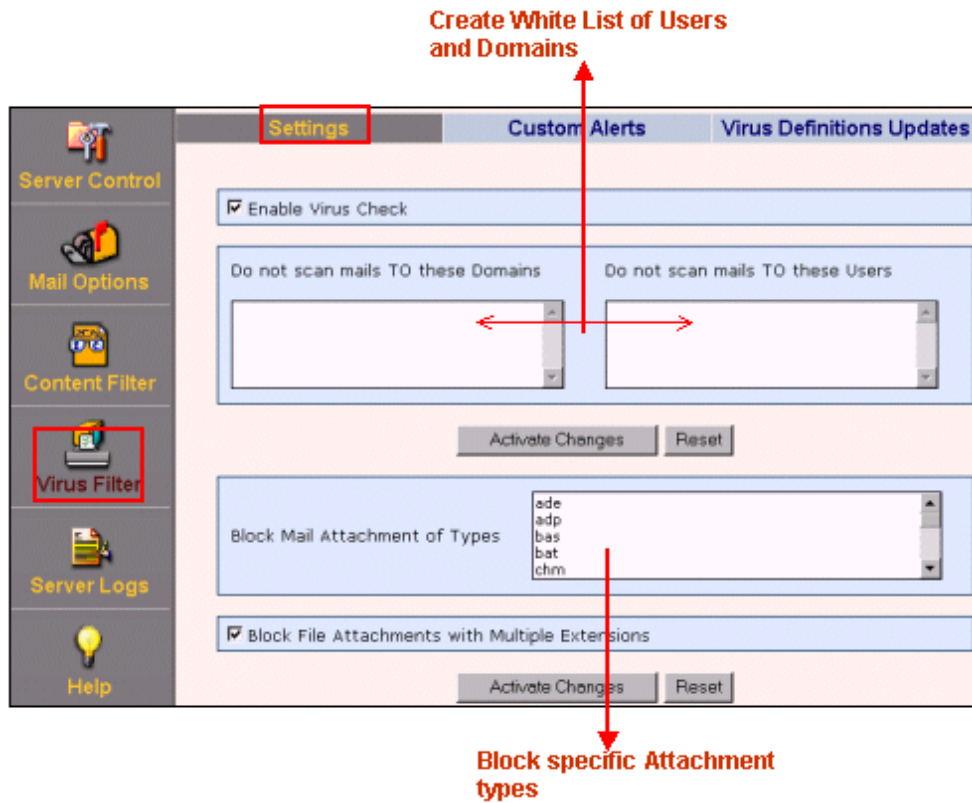


Figure 6 Block Specific Attachment Types

## Other Features

In addition MailScan for Linux has the following features:

- Creating and sending custom alerts when virus or Spam is detected in mails to the mail sender, receiver and admin.
- Move Spam and virus infected mails to a directory or mailbox.
- Start anti virus/Spam and mail service directly from the application without quitting or reboot.
- Allow administrators to import files with details of users, virtual users and access files.
- Archive all mails in a directory or mailbox.
- Provide detailed logs of mail service, Spam and anti virus and an Interface log.

## **MailScan for Linux also has:**

- Anti Virus Scanner
- Content (Spam) Scanning
- Virus Scanning
- Automatic Updates
- Scan Control
- Attachment Reservation
- Policy based Rule-Sets
- Customized Alert Messages
- Malicious Attachments Detection
- MailScan works like a Service
- Heuristics Scanning
- Easy and convenient Administration
- Get Up-to-date names of Viruses via e-mail
- Extensive Logs

## **System Requirements**

- Red Hat Linux 9 or higher should be installed on the system.
- A MailServer running on Linux should be installed.
- 40 MB of free space

Sales enquiries [sales@mwti.net](mailto:sales@mwti.net)

For more information, please visit [www.mwti.net](http://www.mwti.net)