



This document provides information to install and use ProxyGate



User Guide for ProxyGate

Copyright Notice:

All product names referred herein are trademarks or registered trademarks of their respective companies. MicroWorld Technologies Inc. (MWTI) disclaims proprietary interest in the marks and names of others. Although MicroWorld Technologies makes every effort to ensure that this information is accurate, MicroWorld Technologies Inc. will not be liable for any errors or omission of facts contained herein. MicroWorld Technologies Inc. reserves the right to modify specifications cited in this document without prior notice.

Companies, names and data used in examples herein are fictitious unless otherwise noted. No part of this document may be reproduced or transmitted on any form or any means, electronic or mechanical, for any purpose, without the express written permission of MicroWorld Technologies Inc.

MicroWorld Technologies Inc. Copyright All rights reserved.

For Technical support, contact: support@mwti.net

For Sales enquiry, contact: sales@mwti.net

Document Number PG/1.2/08.03

List of Figures

The following figures are included in this guide

| | |
|--|----|
| Figure 1.1 Install – Opening Screen | 12 |
| Figure 1.2 Select Destination Directory | 12 |
| Figure 1.3 Begin Installation | 12 |
| Figure 1.4 Files extracted | 13 |
| Figure 1.5 Finish Installation | 13 |
| Figure 2.1 Typical User Interface | 14 |
| Figure 3.1 ProxyGate Admin | 18 |
| Figure 4.1 General Settings for SMTP Proxy Service | 22 |
| Figure 4.2 Set Bindings for SMTP Proxy Service | 23 |
| Figure 4.3 Incoming Mails for SMTP Proxy Service | 24 |
| Figure 4.4 Aliases Settings for SMTP Proxy Service | 25 |
| Figure 4.5 Sessions for SMTP Proxy Service | 26 |
| Figure 4.6 Logging for SMTP Proxy Service | 27 |
| Figure 4.7 Substitute Domains for SMTP Proxy Service | 28 |
| Figure 4.8 Routing for SMTP Proxy Service | 29 |
| Figure 4.9 Forward Mails for SMTP Proxy Service | 30 |
| Figure 4.10 Reject IP and User for SMTP Proxy Service | 31 |
| Figure 4.10 Access IP or User for SMTP Proxy Service | 32 |
| Figure 5.1 General Settings for POP3 Proxy Service | 34 |
| Figure 5.2 Bindings for POP3 Proxy Service | 35 |
| Figure 5.3 Interface for POP3 Proxy Service | 36 |
| Figure 5.4 Sessions for POP3 Proxy Service | 37 |
| Figure 5.5 Access Restrictions for POP3 Proxy Service | 38 |
| Figure 5.6 Logging for POP3 Proxy Service | 39 |
| Figure 5.7 Connection for POP3 Proxy Service | 40 |
| Figure 6.Non-Proxy Request for POP3 Service | 41 |
| Figure 6.1 General Settings for Port Redirect Service | 43 |
| Figure 6.2 Local Binding Settings for Port Redirect Service | 44 |
| Figure 6.3 Remote Binding Settings for Port Redirect Service | 45 |
| Figure 6.4 Sessions Settings for Port Redirect Service | 45 |
| Figure 6.5 Logging for Port Redirect Service | 46 |

Table Of Contents

| | |
|--|-----------|
| List of Figures | 3 |
| Welcome | 6 |
| About this Guide | 6 |
| Audience | 6 |
| Typographical Conventions | 6 |
| Contact Us | 8 |
| About MicroWorld | 9 |
| ProxyGate Services | 9 |
| Features of ProxyGate | 9 |
| Installation | 11 |
| Software and Hardware Requirements | 11 |
| Prerequisites for Installation | 11 |
| Installation Process | 11 |
| Post Installation Configuration | 13 |
| Getting Started | 14 |
| User Interface | 14 |
| Screen Components | 15 |
| ProxyGate Tasks | 16 |
| To launch ProxyGate tasks | 16 |
| Details of ProxyGate tasks | 16 |
| ProxyGate Admin | 18 |
| To launch ProxyGate Admin | 18 |
| ProxyGate | 19 |
| ProxyGate Admin Details | 19 |
| SMTP Proxy Service | 21 |
| About this Chapter | 21 |
| To add New SMTP Proxy Service | 21 |
| General SMTP Proxy Service Settings | 22 |
| Bindings SMTP | 23 |
| Incoming Mails | 24 |
| Aliases | 25 |
| Sessions SMTP | 26 |
| Logging SMTP Activity | 26 |
| Substitute Domains | 28 |
| Routing | 28 |
| Forward | 30 |
| Reject | 30 |
| Access To | 31 |

| | |
|---|-----------|
| POP3 Proxy Service | 33 |
| To add New POP3 Proxy Service | 33 |
| General POP3 Proxy | 34 |
| Bindings | 35 |
| Interfaces | 36 |
| Sessions POP3 Proxy | 37 |
| Access Restrictions | 38 |
| Logging POP3 Proxy Activity | 38 |
| Connection | 40 |
| Non Proxy Request | 41 |
| Port Redirect Service | 42 |
| General Port Redirect Service Settings | 43 |
| Local Binding Settings | 44 |
| Remote Settings for Port Redirect | 45 |
| Sessions Settings for Port Redirect | 45 |
| Logging Port Redirect Settings | 46 |
| Index | 48 |

Welcome

ProxyGate is a full-featured, multi-threaded SMTP/POP3 proxy and Port redirector for Windows based machines. Taking very little memory & extremely fast, ProxyGate allows you to separate out your Mail Server from direct path of the Internet, in order to avoid any kinds of hacks. You can create any number of services inside ProxyGate & it also supports Proxy Cascading feature. This chapter provides details about the following topics:

- Audience
- How this guide is organized
- Typographical Conventions
- Contact Us

About this Guide

ProxyGate is a proxy server that connects to your gateway server and users with the Internet. It stores and sends messages to and for users. This document provides details to install, configure and use ProxyGate.

Audience

This Guide is for system administrators and users involved in installing and using ProxyGate

Typographical Conventions

The following typographical conventions are used in this guide.

| This | Represents |
|-------------------|--|
| Bold | A Menu or a menu option. When enclosed in “ “, the name is as displayed in the screen. |
| “ “ | A long name is denoted by the first few words and It is enclosed in ‘ ‘. |
| SMALL CAPS | Buttons on dialog boxes/child windows. |
| <i>Italics</i> | Entry Fields in dialog boxes/child windows. |
| Type | Information you need to enter. |

Hyperlink Is a hyperlink. Click to access related topics.

Tasks Represents a key task of feature.

- When you have to navigate between menus the following convention is used: **menu > menu >...**

For e.g. **MailScan > Monitor > Settings**. Means: in MailScan, **select** (click) the Monitor menu and **choose** (click) Settings.

Related Topics

Provides a cross-reference to a related topic.

Note

Provides additional information about a certain topic.

- Bulleted lists provide information or indicate procedures with steps that you carry out sequentially.

Contact Us

This section gives details to obtain support from MicroWorld. We offer 24x6 support to our customers through e-mail and telephone.

E-Mail support

We provide e-mail support.

- Drop us a line at <mailto:support@mwti.net>

Telephone Support

- We provide telephonic support.
- Call us at + 1 - 732 - 6077501 Fax: +1 - 732 – 6077503 (USA Office)
- Call us at +91 - 22 - 8265701 (5 lines) Fax: +91 - 22 – 8304750 (Asia – Pacific Office)

Our offices:

US Office

MicroWorld Technologies Inc.

109, White Oak Lane, Suite # 200-P, Old Bridge,
NJ 08857,

USA

Tel: (+1)-732-607 7501/02

Fax: (+1)-732-607 7503

Asia - Pacific Office

Plot No. 80, Road No. 15,

MIDC - Marol, Andheri (E),

Mumbai - 400 093, India.

Tel: (+91-22) 8265701 - 05

Fax: (+91-22) 830 4750

For more information about our products, please visit: <http://www.mwti.net/>

About MicroWorld

MicroWorld is one of the leading solution providers in the areas of content security and Anti-Virus products for desktops, large networks and corporate mail servers. New products that are launched include ProxyGate and eTraq, which is a CRM application. With its corporate head quarters in New Jersey and development center in Mumbai, India, we offer round-the-clock support, through our regional offices and over 10,000 channel partners spread across the globe

ProxyGate Services

ProxyGate allows you to run three types of services. They are briefly explained below:

- **SMTP Proxy Service** - This service creates a proxy to control incoming and outgoing email through the ProxyGate server and onto the network, including email aliases and filtering.
- **POP3 Proxy Service** - This service creates a proxy to control downloading of emails through the ProxyGate server and onto the network.
- **Port Redirector Service (PRS)** - Port redirection is an important concept in TCP/IP emulators because it allows other people to connect to your PC, as well as allowing some programs to work that normally would not work.

Features of ProxyGate

Features of ProxyGate are given below:

- Full Log of sessions & currently active sessions.
- Any number of services, each can be configured independently to listen on any port or asked to bind on one or multiple IPs.
- SMTP: Can limit number of simultaneous connections.
- SMTP: Can limit size of messages.
- SMTP: Relay control.
- SMTP: Alias manipulation.
- SMTP: Ability to specify Session Timeouts.
- SMTP: Ability to dynamically substitute domains.
- SMTP: Features to route or redirect mails to and from specific users or domains.
- SMTP: Ability to reject mails from specific users, domains or IPs.

- SMTP: Ability to specify IPs, domains or users from which mails are to be accepted.
- POP3: Ability to specify access restrictions.
- POP3: Direct or via Cascaded Proxy (supporting both Socks 4 and Socks 5).
- POP3: Ability to pipe non-proxy requests to predetermined server.

Installation

Software and Hardware Requirements

Your system should have **Windows 95 /NT** or above installed.

Your system should have minimum of **64 MB RAM, 50 MB** of free hard disk space and a CD ROM player.

Prerequisites for Installation

Before installing the software ensure that the following are done:

- Find your systems operating system version and service pack number.
- Check for the largest drive/partition and install ProxyGate on that drive/partition.

Installation Process

Installation is very simple, a point and click operation and done using the built-in install wizard. A user-friendly interface prompts you and presents a range of choices. Instructions are displayed in the screens that give you specific information. To abort installation, select “Cancel” in any of the screen. This section gives the step-by-step installation process.

- The software is sent to you in a CD. Load the CD in the player and open the CD Rom directory.
- Select “**autorun**” icon. Screen in Figure 1.1 is displayed. This is the start up screen for installing the application. Click **Next**.



Figure 1.1 Install – Opening Screen

- Following table provides details of each step for installation.

Step 1

In Figure 1.2, select Next, to begin installation. Screen in Figure 1.2 is displayed. Select the directory to install ProxyGate.



Figure 1.2 Select Destination Directory

Step 2

The application is ready to be installed. Click Install.



Figure 1.3 Begin Installation

Step 3

Required files are extracted




Figure 1.4 Files extracted

Step 4

The installation is complete. Select Finish



Figure 1.5 Finish Installation

- To start ProxyGate, click **Start > Programs > ProxyGate for Windows > ProxyGateAdmin**. The following icon is added to the Windows task bar .
- Right click the icon and choose **ProxyGate Admin**.

Post Installation Configuration

- Ensure that other POP3 Servers, SMTP Servers and Proxy Servers are not running on the system.
- To configure multiple services, multiple IPs needs to be assigned to the system.

Getting Started

User Interface

This chapter gives details of standard conventions used in this guide. Also included are components of a typical user interface, how to navigate the screens, meanings of various symbols and buttons, types of fields and how to enter values in them.

User interface is the front end of the software. The software is made of different screens. You carry out tasks; enter values, set preferences, etc., using screens. This section explains the components of a typical user interface.

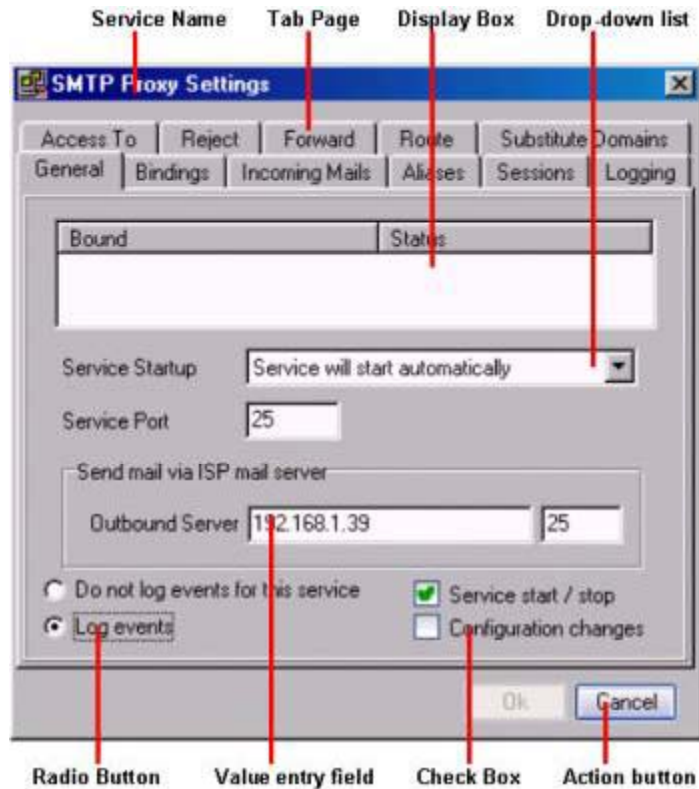


Figure 2.1 Typical User Interface

Screen Components


Typical screen components are explained below:

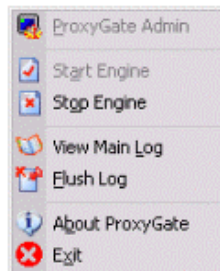
| Screen Component | Function |
|--------------------------|--|
| Service Name | The service type currently bring setup is displayed. |
| Tab Page | Represents a task used to configure and run a service. There are multiple tab pages in the screen. |
| Display box | Non-editable box shows a list of values. |
| Drop-down list | Displays a list of pre-configured values. The adjacent name provides info about its function. Click to select a value. |
| Value entry field | You need to enter valid values in this field. Click in the field and type. |
| Radio Button | Adjacent name provides info about the radio button. Click in the circle to select it. |
| Check Box | Click to select. Adjacent name provides info about the check box. |
| Action Button | Click to perform actions like Ok, save, cancel, etc. |

ProxyGate Tasks

ProxyGate has a group of tasks that allow you to run the software. The application is configured to execute them automatically. You can run some of the tasks manually. This section provides a list of different tasks, manually run with MailScan. Detailed explanations of the tasks, meanings of fields etc are described in successive individual chapters.

To launch ProxyGate tasks

- After the application is installed, in the application status bar, right click . Or in **Start > Programs > ProxyGate for Windows**, click **ProxyGateAdmin**.
- Pop up menu shown below, is displayed. Tasks are displayed as links. Click on the links to open them.



Details of ProxyGate tasks

Details of each task are given in the following table.

| Task Name | Function |
|------------------------|---|
| ProxyGate Admin | Opens the Proxy Admin screen. You can configure and run tasks related to POP3 Proxy Service and SMTP Proxy Service. For more details, refer ProxyGate Admin Details. |
| About ProxyGate | Displays the splash screen of ProxyGate Server. |
| Start Engine | Starts the ProxyGate Engine. By default the engine is always started and running. Refer Start Engine |
| Stop Engine | Stops the ProxyGate engine from running. Refer Stop Engine. |
| Flush Log | Flushes the ProxyGate Admin log files. |

| Task Name | Function |
|----------------------|---|
| View Main Log | Displays the Main Log Files of ProxyGate. Refer View Log Files. |
| Exit | Exits from ProxyGate. It continues to run in the background. |


ProxyGate Admin

ProxyGate Admin carries all the modules of ProxyGate: SMTP Proxy Service and POP3 Proxy Service. Screen in Figure 3.1 shows the ProxyGate Admin screen. The ProxyGate Admin allows you to perform the following tasks:

- Add New POP3 Proxy Service
- Add New SMTP Proxy Service
- View Main Log Files
- Start/Stop Proxy Engine
- Start/Stop and modify Proxy Service

To launch ProxyGate Admin

In the Windows application task bar, right click  and choose ProxyAdmin. Screen in Figure 3.1 is displayed.

- If the ProxyGate Admin icon is not displayed in the task bar, click **Start > Programs > ProxyGate for Windows > ProxyGateAdmin**. The  icon is displayed in the Windows task bar. Right click and choose ProxyAdmin. Screen in Figure 3.1 is displayed.

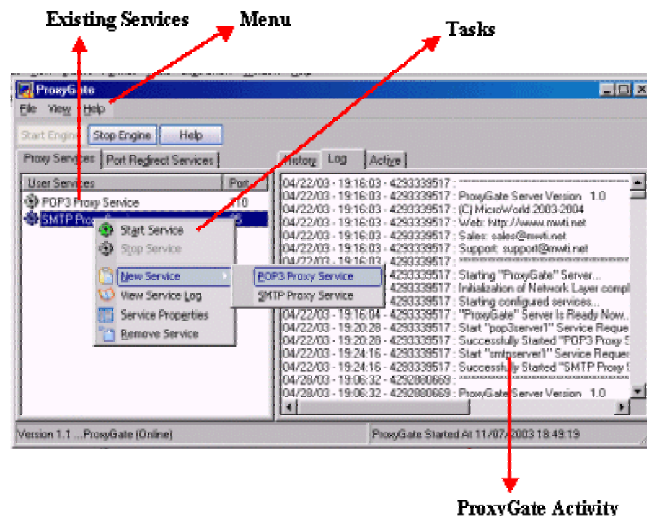


Figure 3.1 ProxyGate Admin

ProxyGate

There are two main frames in the screen.

Services:

Displays the list of services currently running. The very first time you start the application this frame is blank. You need to first **add a new service**, either POP3 Proxy Service or SMTP Proxy Service. The service you add is displayed in this frame.

History

Displays the activities of the running service. For the service selected in the “Services” Frame, following details are displayed:

Start Time: Displays start time of client activity

Client IP: Displays IP of client who has connected to the service

Server IP: Displays outbound server IP

RemotePort: Displays the port number of remote outbound server

Info: Displays user ID, logged in at the remote outbound server

Bytes Sent: Displays number of Bytes sent

Bytes Received: Displays number of Bytes received

Log

Provides a log of MailScan for Lotus Notes. Details of ProxyGate version, time of starting and stopping services, etc. are displayed.

Active

For the SMTP, POP3 or General services, you can view details of client IP that logged in, time when the session was started, Server IP and the Remote Port Number.

ProxyGate Admin Details

Refer to screen in [Figure 3.1](#), the screen elements are explained below.

:

File: Add new service and start/stop engine.

View: View and modify for the selected service and view main log file

Options: Start/stop and remove selected service

Help: Run on-line help, change password, view license information and the splash screen of ProxyGate.

File

Allows you to perform the following tasks:

- New Service
- Start Engine
- Stop Service
- Exit

View

Allows you to perform the following tasks

- Service Properties
- View Main Log

Options

Allows you to perform the following tasks:

- Start Service
- Stop Service
- Remove Service

Help

Allows you to perform the following tasks:

- Help Topics
- Password
- License Information
- About

SMTP Proxy Service

This chapter provides information to configure SMTP Proxy settings of ProxyGate. Users use the service when they wish to connect to the proxy to send messages. The first time you start the software, you have to add the service. The service is created with default settings. You can then modify the settings.

About this Chapter

This chapter provides information to configure SMTP Proxy settings of ProxyGate. Users use the service when they wish to connect to the proxy to send messages. The first time you start the software, you have to add the service. The service is created with default settings. You can then modify the settings.

The following topics are included:

- [To add New SMTP Proxy Service](#)
- [General](#)
- [Bindings](#)
- [Incoming Mails](#)
- [Alias](#)
- [Sessions](#)
- [Logging](#)
- [Substitute Domains](#)
- [Routing](#)
- [Forward](#)
- [Reject](#)
- [Access To](#)

To add New SMTP Proxy Service

- In [Figure 3.1](#), select **File > New Service > SMTP Proxy Service**. Screen in [Figure 4.1](#) is displayed.
- The screen has tabs that allow you to configure individual settings.
- Next sections provide information about each tab page.

General SMTP Proxy Service Settings

This tab page allows you to carry out general settings for the service. You can select how the service should start: automatically, manual start/stop or if the service is disabled. You must enter the IP of the outbound server and the port number available for the service.


Note:

Machines running on Win 95/98/ME have only a single IP or interface and so it is not possible to add multiple services on such machines. You can add multiple services on machines running with Win 2000/XP/NT.



Figure 4.1 General Settings for SMTP Proxy Service

| Field Name | Description |
|------------------------|---|
| Service Name | Enter the unique name of the service you have selected to configure i.e. SMTP Proxy Service or SMTP Proxy Service1. If you are configuring an existing service, then the name previously added is displayed here and the field is non-editable. |
| Description | Enter a brief description of the settings configuration you are carrying out. |
| Service Startup | Drop-down box allows you to select how the service starts. Select one of the values. Available values are: Service will start automatically: Select this to start the service automatically each time your system is booted. Service is disabled: Select this to disable the service. When the service is |

| Field Name | Description |
|------------------------|---|
| | disabled, the icon changes to  . |
| | Manual Start / Stop: Select the link if you need to start and stop the service manually. |
| Service Port | Enter port number to which the service connects. Default Port number is 25. |
| Outbound Server | Enter IP address of the SMTP Relay Host for Out Bound Messages, which accepts messages. Enter the Port number of this server through which the outbound server accepts messages. Ensure that this server is running before starting the service. |

- Select **Ok** to save.

Bindings SMTP

A system may have multiple IPs with a single network card or multiple IPs with multiple network cards. You can specify the IP that the clients use to connect with the service. Otherwise all IPs are bound to incoming connections. This tab allows you to bind a single or multiple IPs to the service. Binding is done for incoming connections.

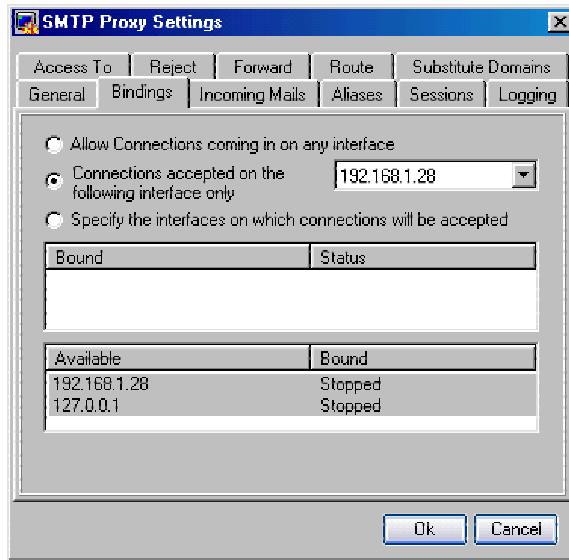


Figure 4.2 Set Bindings for SMTP Proxy Service

| Field Name | Description |
|---|--|
| Allow Connections coming in on any interface | A PC may have multiple IPs with a single network card or multiple IPs with multiple network cards. Select the radio button to allow any IP to connect with the Proxy Server. |

| Field Name | Description |
|---|---|
| Connections accepted on the following interface only | Select the radio button to allow connections to be accepted on a specific IP. When the radio button is selected, the adjacent drop-down list box is enabled. A list of existing interfaces is displayed. ProxyGate extracts these during installation from your network configuration of your system. Select the required IP. |

| | |
|--|---|
| Specify Interface on which connections will be accepted | Select the radio button to specify or bind the IP on which connections are accepted. The display box shown in the following figure allows you to specify the IP of the new interface and modify the existing IPs. |
|--|---|



There are two frames in the display box. Bottom frame shows the IPs that are available for binding. Top frame shows IPs that are bound.

Double click on an IP in the bottom frame and edit it as required. It is moved to the top frame, meaning that it is bound to the proxy. In the top frame, if you double click on the IP, it is moved back to the lower frame.

Incoming Mails

This tab allows you to add local mail domain to which incoming mails are sent. You can specify or limit the number of recipients and also specify the maximum mail and attachment size. Some users use the proxy to relay mails. Relay service can be used by Spammers to send Spam.



Figure 4.3 Incoming Mails for SMTP Proxy Service

| Field Name | Description |
|--------------------------------------|--|
| Local Mail Domains | Enter the local mail domain name in the field and click Add. The name is displayed in the list box. To remove a name from, click on the name and select Remove. |
| Limit number of recipients to | Set the maximum number of recipients who can receive a cc of a mail. For e.g. if you have addressed a mail to 6 e-mail IDs, and entered the value in this field as 5, then the mail is not delivered to the sixth ID. |
| Limit message size to max | Enter the maximum incoming message size in KB that should be allowed. Mails above this size are not accepted. |
| Relaying | <p>When neither the sender nor receiver of mails are from the local domain, you can specify how relaying of mails is allowed. Drop down list displays the values you can select</p> <p>Allow Relaying: Relaying of mails is allowed This is set as default value if a local domain is not present.</p> <p>Reject relay attempts: Relay is not allowed</p> <p>Silently discard relay attempts: When an attempt is made to start relay, it is not allowed to initiate and no warning message is sent to the mail sender.</p> |

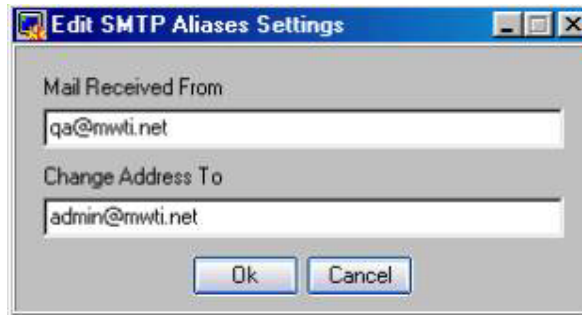
Aliases

When mails are sent to a recipient, you can specify an alias that receives the mails on the original recipient's behalf.



Figure 4.4 Aliases Settings for SMTP Proxy Service

- Display box shows a list of original recipient IDs and the alias ID who receives the mail on their behalf. To add an alias, select Add. The following dialog box is displayed.



- Enter the email IDs in the respective fields and select **Ok**. The names are listed in the display box shown in Figure 4.4.

Sessions SMTP

When a user does not show any activity, you can specify the timeout in seconds after which the connection is broken. This reduces the idle time of the network and allows other users to access the proxy.



Figure 4.5 Sessions for SMTP Proxy Service

- Select the check box and enter the timeout in seconds.

Logging SMTP Activity

ProxyGate has a robust reporting feature that allows you to create customized Log files of events for a service. You can choose the session event and configuration event for which Log files are created

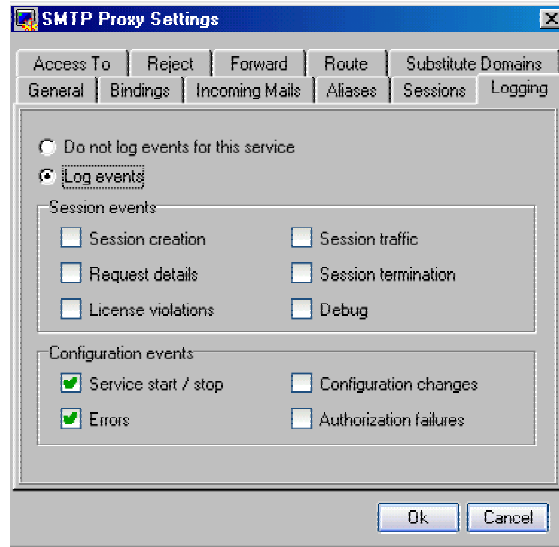


Figure 4.6 Logging for SMTP Proxy Service

| Field Name | Description |
|---|--|
| Field Name Description | Do not log events for this service For the selected service, logs will not be created if you select the radio button. Other fields in this screen are disabled if this option is selected. |
| Log events | Logs are created if this radio button is selected. Other fields in this are enabled only if this button is selected. Logs can be created for the session and configuration events. |
| Session events | Details of a session are logged. You can allow log files to be created when the following events occur. |
| Session creation | Logs details when a session is created |
| Session traffic | Logs details of traffic flowing out of the service in a session |
| Request details | Logs request details of users who have requested for a connection |
| Session termination | Logs details when a session is terminated |
| License violations | Logs details if any license violations occur during a session |
| Debug | Logs details of any bugs that occur in a session |
| Configuration events | Log files are created when the following configuration events occur |
| Service start / stop | Log details when a service is started or stopped |
| Configuration | Logs details when changes in the service configuration are done |

| Field Name | Description |
|------------------------|---|
| changes | |
| Errors Logs | Details of errors during configuration events |
| Authorization Failures | Failure Log details when authorizations by users fail |

Substitute Domains

Screen allows you to substitute a domain with another domain. This is used when you wish to redirect mails from domain to another domain. This feature is useful when an existing domain does not exist or needs to be replaced.

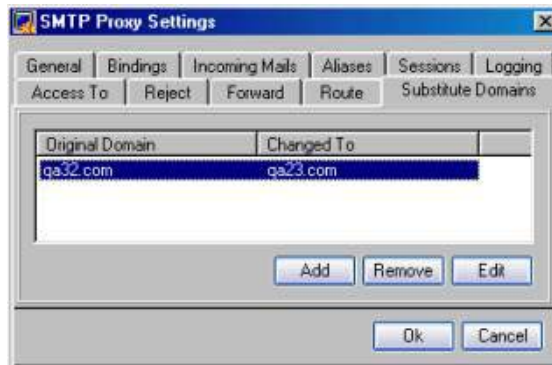


Figure 4.7 Substitute Domains for SMTP Proxy Service

- Click **Add**. Dialog box in the following screen is displayed.



Enter the original and the new domains in the fields and select Ok. The names are displayed in the screen shown in Figure 4.7

Routing

When mails are sent from a domain, you can specify the recipient ID to which they should be automatically routed. E.g. all mails sent by sales@mwti.net can be automatically routed to

mailto:support@microworld.com. There are two frames in the screen. Top frame allows you to route mails for a sender and bottom frame to route for the recipient of a mail

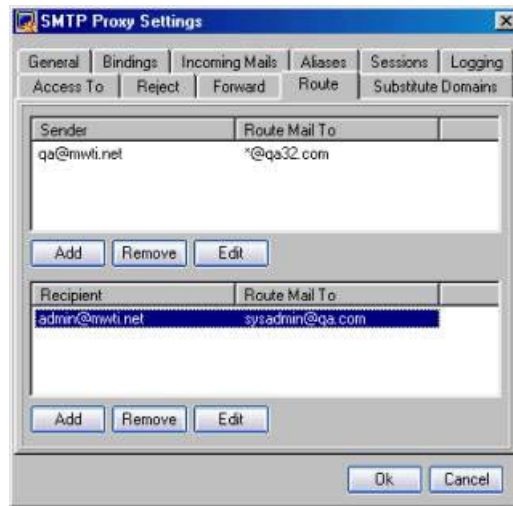


Figure 4.8 Routing for SMTP Proxy Service

- To route mails for a sender, click Add in the top frame. Enter the sender and the routing IDs in the respective fields and click Ok. The names are displayed in the above screen.



- Repeat the process for Recipient

Forward

Tab page allows you to send a copy of mails received or sent by a user or domain to an e-mail ID or domain.

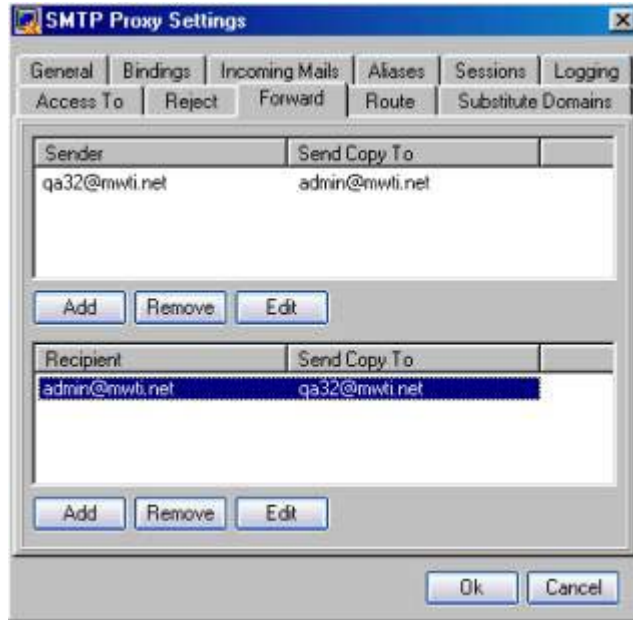


Figure 4.9 Forward Mails for SMTP Proxy Service

To send copy of sender's mails, click **Add** in the top frame. Enter the sender's ID and the ID to which a copy should be sent, in the respective fields and click **Ok**. The names are displayed in the above screen



Reject

Tab page allows you add an IP or user ID to the reject list. Connection requests from listed users are rejected outright. This helps to fight known Spammers.

To add an IP to the reject list

Enter the IP in the field **Reject IP** and select Add. The IP is displayed in the adjacent list box.

To add a user to the reject list

Enter the user ID in the **Reject User** field and select Add. The user ID is displayed in the list box.

To remove the names from the reject list, click on the name in the list box and select Remove.

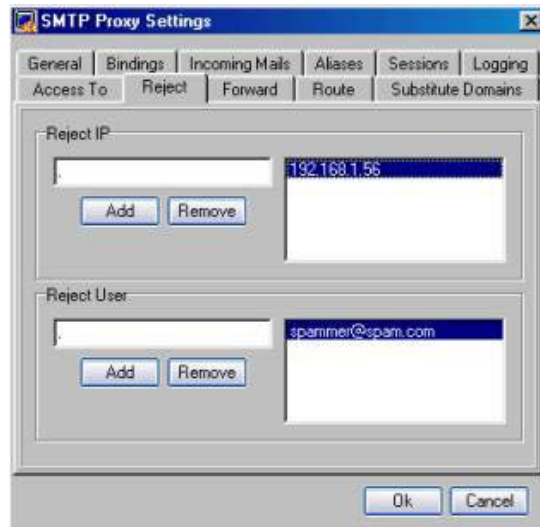


Figure 4.10 Reject IP and User for SMTP Proxy Service

Access To

Tab page allows you to add an IP or user to the access allow list. The IP or users in this list are allowed access to the service.

To add an IP to the Access list

Enter the IP in the field **Access IP** and select Add. The IP is displayed in the adjacent list box.

To add a user to the Access list

Enter the user ID in the **Access User** field and select Add. The user ID is displayed in the list box.

To remove the names from the list, click on the name in the list box and select Remove.

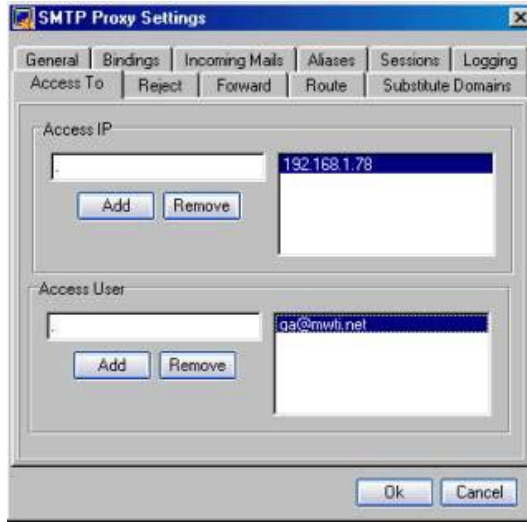


Figure 4.10 Access IP or User for SMTP Proxy Service

POP3 Proxy Service

This chapter provides information to configure POP3 Proxy settings of ProxyGate. Users use the service when they wish to connect to the proxy to receive messages. The first time you start the software, you have to add the service. The service is created with default settings. You can then modify the settings.

The following topics are included in this chapter

- [To add New POP3 Proxy Service](#)
- [General](#)
- [Bindings](#)
- [Interface](#)
- [Sessions](#)
- [Access Restrictions](#)
- [Logging](#)
- [Connection](#)
- [Non-Proxy Request](#)

To add New POP3 Proxy Service

- In [Figure 3.1](#), select **File > New Service > POP3 Proxy Service**. Screen in [Figure 5.1](#) is displayed.
- The screen has tabs that allow you to configure individual settings.

Next sections provide information about each tab page.

General POP3 Proxy

This tab page allows you to carry out general settings for the service. You can select how the service should start: Automatically, manual start/stop or if the service is disabled. You must enter the IP of the outbound server and the port number available for the service.

A key feature of this tab is adding delimiter for the domain. Delimiter allows you to assign a unique character to the user ID so that it is uniquely identified.

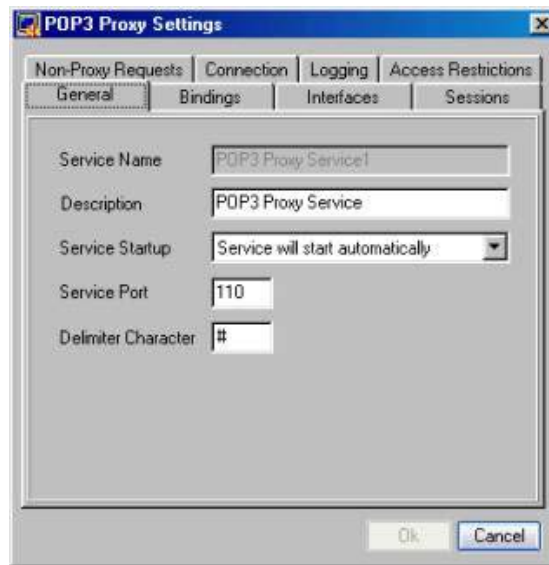


Figure 5.1 General Settings for POP3 Proxy Service

| Field Name | Description |
|------------------------|--|
| Service Name | Enter the unique name of the service you have selected to configure i.e. POP3 Proxy Service or POP3 Proxy Service1. If you are configuring an existing service, then the name previously added is displayed here and the field is non-editable. |
| Description | Enter a brief description of the settings configuration you are carrying out. |
| Service Startup | Drop-down box allows you to select how the service starts. Select one of the values. Available values are: Service will start automatically: Select this to start the service automatically each time your system is booted. Service is disabled: Select this to disable the service when system is started. Manual Start / Stop: Select this if you need to start and stop the service manually. |
| Service Port | Enter port number to which the service connects. Default Port number is 25. |

| Field Name | Description |
|------------------|---|
| Delimiter | Delimiter like #, \$, etc allows you to assign a unique character to the user ID so that it is uniquely identified. It isolates the user name and the domain. |

Bindings

A system may have multiple IPs with a single network card or multiple IPs with multiple network cards. You can specify the IP that the clients use to connect with the service. Otherwise all IPs are bound to incoming connections. This tab allows you to bind a single or multiple IPs to the service. Binding is done for incoming connections

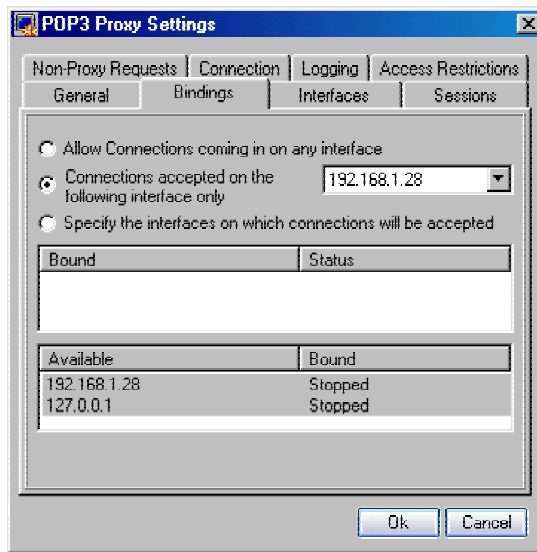


Figure 5.2 Bindings for POP3 Proxy Service

| Field Name | Description |
|---|---|
| Allow Connections coming in on any interface | A PC may have multiple IPs with a single network card or multiple IPs with multiple network cards. Select the radio button to allow any IP to connect with the Proxy Server. |
| Connections accepted on the following interface only | Select the radio button to allow connections coming from a specific IP. . When the radio button is selected, the adjacent drop-down list box is enabled. A list of existing interfaces is displayed. ProxyGate extracts these during installation from your network configuration of your system. Select the required IP. |

| Field Name | Description |
|--|---|
| Specify Interface on which connections will be accepted | <p>Select the radio button to specify or bind the IP on which connections are accepted. The display box shown in the following figure allows you to specify the IP of the new interface. When the radio button is selected, the display box is enabled.</p> <p>There are two frames in the display box. Bottom frame shows the IPs that are available for binding. Top frame shows IPs that are bound.</p> <p>Double click on an IP in the bottom frame to move it to the top frame, meaning that it is bound to the proxy. In the top frame, if you double click on the IP, it is moved back to the lower frame.</p> |



Interfaces

Tab page allows you to specify the interface IP that are allowed to connect to the service. You can specify the IP or allow connections to any IP that sends a request for a connection

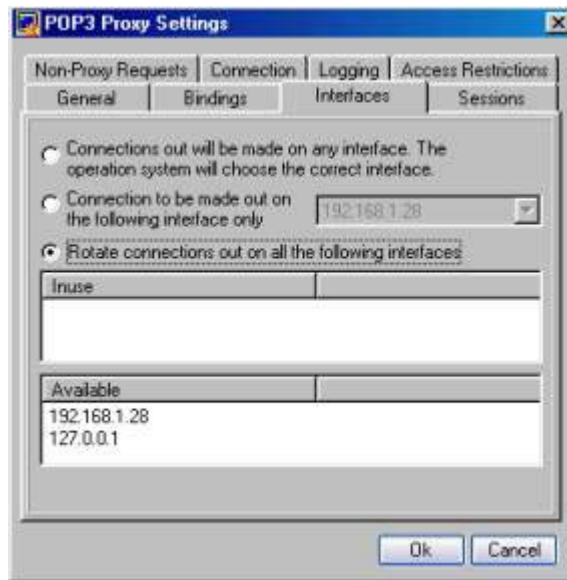


Figure 5.3 Interface for POP3 Proxy Service

| Field Name | Description |
|-----------------------------|--|
| Connections out..... | Connections will be made for any interface and the system chooses the appropriate interface. |

| Field Name | Description |
|---|---|
| Connections will be made on the following interface only | Select the radio button to allow connections to be accepted on a specific IP. When the radio button is selected, the adjacent drop-down list box is enabled. A list of existing interfaces is displayed. These are extracted by ProxyGate during installation from your network configuration of your system. Select the required IP. |

Rotate connections out on all of the following interfaces Select the radio button to specify or bind the IP on which connections are accepted. The display box shown in the following figure allows you to specify the IP of the new interfaces. When the radio button is selected, the display box is enabled.



There are two frames in the display box. Bottom frame shows the IPs that are available for binding. Top frame shows IPs that are bound.

Double click on the IP in the lower frame. It is moved to the top frame, meaning that it is bound to the proxy. In the top frame, if you double click on the IP, it is moved back to the lower frame.

Sessions POP3 Proxy

When a user does not show any activity, you can specify the timeout in seconds after which the connection is broken. This reduces the idle time of the network and allows other users to access the proxy.



Figure 5.4 Sessions for POP3 Proxy Service

Select the check box and enter the timeout in seconds.

Access Restrictions

Tab allows you to specify the IPs that should be allowed or denied access to the service. To allow access to an IP, enter the IP in the Access IP field and select Add. The name is displayed in the adjacent list box.

To reject access to an IP, enter the IP in the Reject IP field and select Add. The IP is displayed in the adjacent list box.

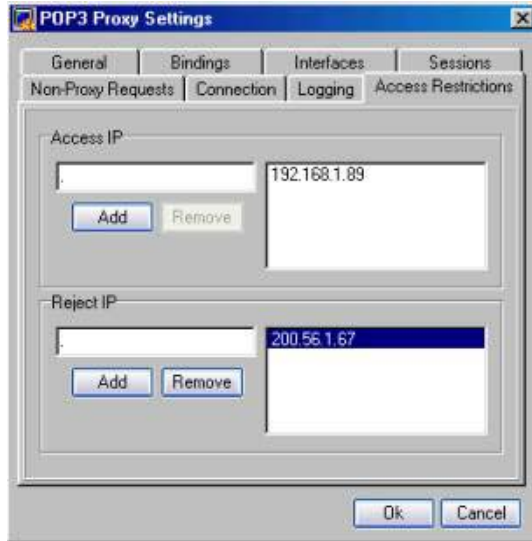


Figure 5.5 Access Restrictions for POP3 Proxy Service

Logging POP3 Proxy Activity

ProxyGate has a robust reporting feature that allows you to create customized Log files of events for a service. You can choose the session event and configuration event for which Log files are created

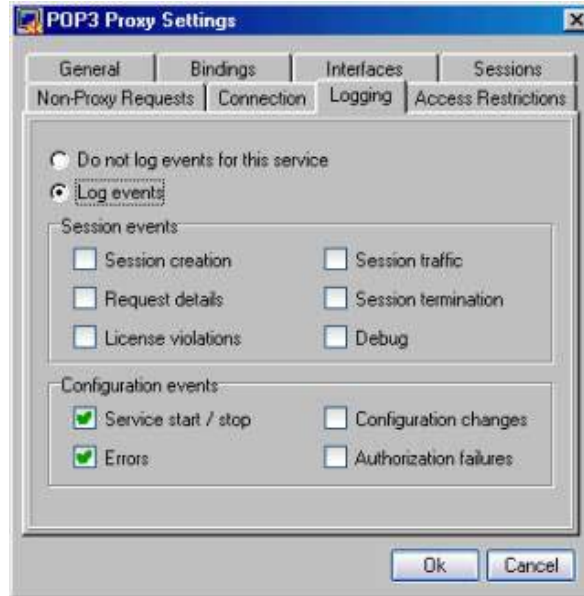


Figure 5.6 Logging for POP3 Proxy Service

| Field Name | Description |
|---|--|
| Do not log events for this service | For the selected service, logs will not be created if you select the radio button. Other fields in this screen are disabled if this option is selected. |
| Log events | Logs are created if this radio button is selected. Other fields in this are enabled only if this button is selected. Logs can be created for the session and configuration events. |
| Session events | Details of a session are logged. You can allow log files to be created when the following events occur. |
| Session creation | Logs details when a session is created |
| Session traffic | Logs details of traffic flowing out of the service in a session |
| Request details | Logs request details of users who have requested for a connection |
| Session termination | Logs details when a session is terminated |
| License violations | Logs details if any license violations occur during a session |
| Debug | Logs details of any bugs that occur in a session |
| Configuration events | Log files are created when the following configuration events occur |
| Service start / stop | Log details when a service is started or stopped |

| Field Name | Description |
|-------------------------------|---|
| Configuration changes | Logs details when changes in the service configuration are done |
| Errors | Logs details of errors during configuration events |
| Authorization Failures | Logs details when authorizations by users fail |

Connection

Tab allows you to specify how connections to the service are made. There are three ways in which connections are granted: Directly, through cascaded proxy server and through Socks proxy.

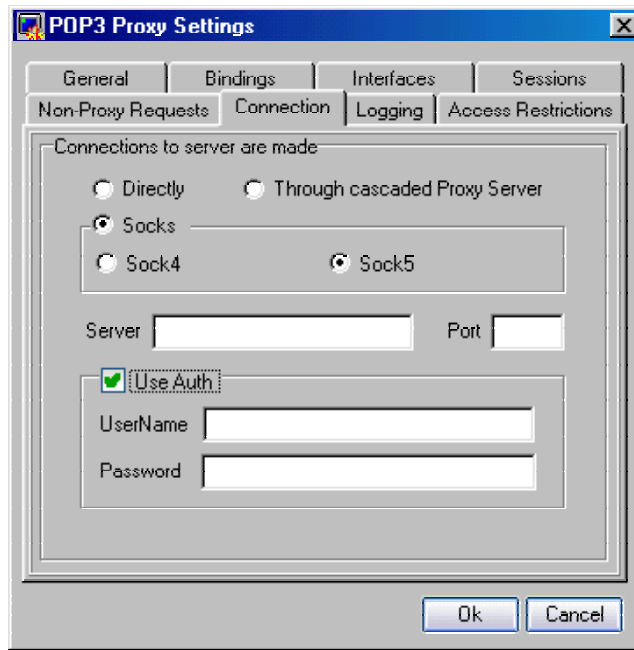


Figure 5.7 Connection for POP3 Proxy Service

| Field Name | Description |
|-------------------------------|--|
| Directly | Connection requests are made directly to the remote POP3 server. Other fields in this screen are disabled if you select this option. |
| Through Cascaded Proxy | If your network uses multiple proxies and the connections are routed through a series of proxies then select this radio button. You need to enter the cascaded proxy IP and port number. |
| Socks | Select the radio button if the connection is made using a Socks proxy. You can choose either Socks 4 or Socks 5 proxy. |

| Field Name | Description |
|------------------|--|
| Socks 4 | This type of proxy does not require a user name and password for authentication. |
| Socks 5 | This type of proxy needs user name and password for authentication |
| User Auth | The fields for User Name and Authentication are enabled only if Socks 5 is selected. Enter the two values. |

Ensure that the remote server is running before starting the service.

Non Proxy Request

When requests for connections are made from non-proxy (Clients), you can reject the request or pipe the request through a server whose IP and port you can specify. This prevents hackers and Spammers from using your service.

To allow non-proxy requests, select “Pipe request through a pre-determined server”. The fields Server and Port are now enabled. Enter the IP address and port number of the remote SMTP server in the respective fields. The remote server should be running when this request is made.

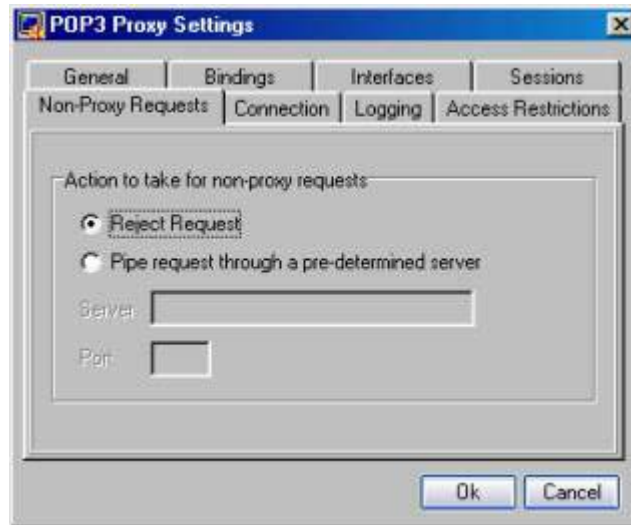


Figure 6.Non-Proxy Request for POP3 Service

Port Redirect Service

Port redirect services provides a unique feature that allows you to prevent hackers from gaining access to your network through the public port of the remote SMTP server. You can redirect mails in your network to another port. The messages are sent from this port to the port of the remote SMTP server that connects to the Internet.

Port redirector service allows you to direct traffic from one port on machine A to another port on machine B. For example, if you run an Internet Webserver on a machine inside your LAN (which does not have access to the Internet) and want to provide access to the Intranet services for a user on the Internet (without exposing the Intranet Webserver to anyone on the Internet), you could use Port Redirector to enable this feature.

For example, say you are running an FTP server on your own PC (inside the LAN) and you want others to be able to connect to it, get files, upload files, etc. What you need to do is pick a port number, any port number above 1024 (for security reasons), and tell ProxyGate that any connections on that port are really connections to your FTP server :-). So effectively, you can run services on many of your computers inside LAN, and give access to these services for people on the Internet.

Again, using PRS, a small ISP can give its users, a facility to host web, FTP and other services.

Topics in this section:

- [General Port Redirect Service](#)
- [Local Bindings Settings](#)
- [Remote Settings for Port Redirect](#)
- [Sessions settings for Port Redirect](#)
- [Logging Port Redirect Settings](#)

General Port Redirect Service Settings

Tab page allows you to specify general settings for port redirect service.

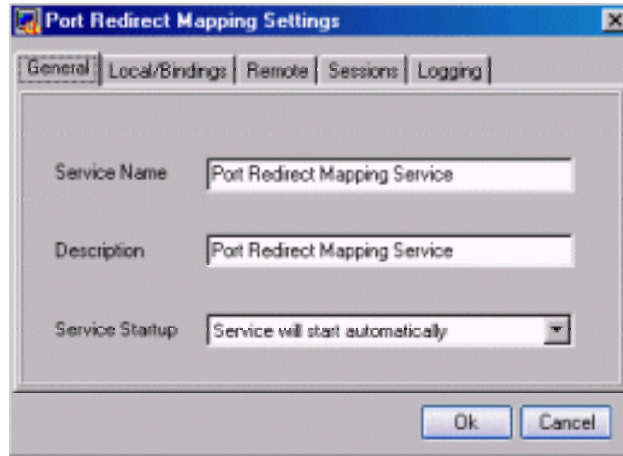


Figure6.1 General Settings for Port Redirect Service

| Field Name | Description |
|------------------------|---|
| Service Name | Enter the new port redirect service name. |
| Description | Enter brief description of the new service. |
| Service Startup | Drop-down box allows you to select how the service starts. Select one of the values. Available values are: Service will start automatically: Select to start the service automatically each time your system is booted. Service is disabled: Select to disable the service. Manual Start / Stop: Select this if you need to start and stop the service manually. |

Local Binding Settings

Tab page allows you to specify the local binding settings

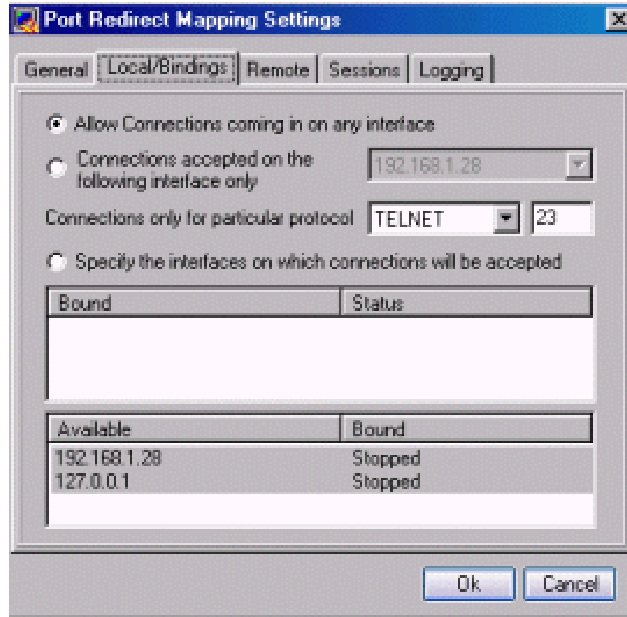


Figure 6.2 Local Binding Settings for Port Redirect Service

| Field Name | Description |
|--|---|
| Allow Connections coming in on any interface | A PC may have multiple IPs with a single network card or multiple IPs with multiple network cards. Select the radio button to allow any IP to connect with the Proxy Server. |
| Connections accepted on the following interface only | Select the radio button to allow connections to be accepted on a specific IP. When the radio button is selected, the adjacent drop-down list box is enabled. A list of existing interfaces is displayed. ProxyGate extracts these during installation from your network configuration of your system. Select the required IP. |
| Connections only for particular protocol | Select the protocol to be used to connect to the remote server from the drop-down list. Select the port number to be used by this protocol from the adjacent drop-down. |
| Specify Interface on which connections will be accepted | Select the radio button to specify or bind the IP on which connections are accepted. The display box shown in the following figure allows you to specify the IP of the new interface and modify the existing IPs. |

There are two frames in the display box. Bottom frame shows the IPs that are available for binding. Top frame shows IPs that are bound.



Double click on an IP in the bottom frame and edit it as required. It is moved to the top

Field Name

Description

frame, meaning that it is bound to the proxy. In the top frame, if you double click on the IP, it is moved back to the lower frame.

Remote Settings for Port Redirect

Tab page allows you to specify the remote server IP and its port number.

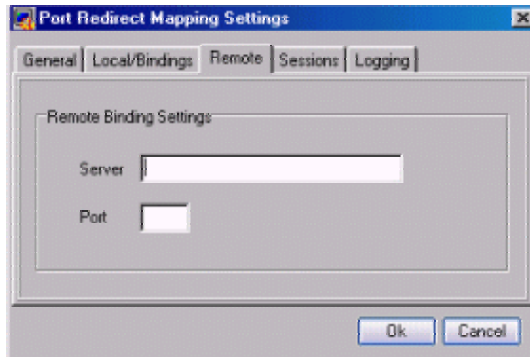


Figure 6.3 Remote Binding Settings for Port Redirect Service

Sessions Settings for Port Redirect

Tab page allows you to specify the inactivity time out in seconds. Connection to the server is reset if there is no activity in this period.

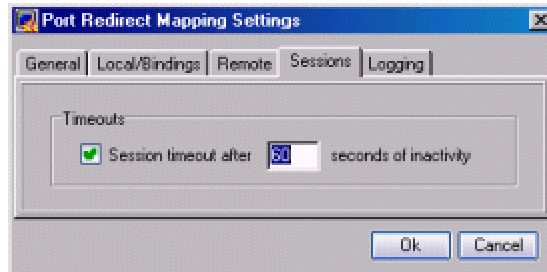


Figure 6.4 Sessions Settings for Port Redirect Service

Logging Port Redirect Settings

Tab page allows you to specify the logging port redirect settings

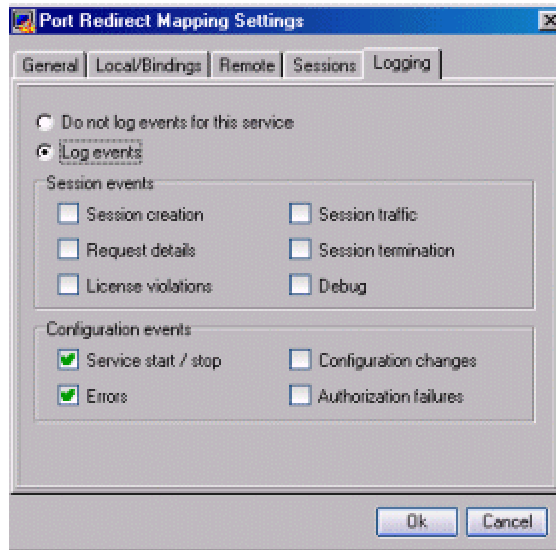


Figure 6.5 Logging for Port Redirect Service

| Field Name | Description |
|---|--|
| Do not log events for this service | For the selected service, logs will not be created if you select the radio button. Other fields in this screen are disabled if this option is selected. |
| Log events | Logs are created if this radio button is selected. Other fields in this are enabled only if this button is selected. Logs can be created for the session and configuration events. |
| Session events | Details of a session are logged. You can allow log files to be created when the following events occur. |
| Session creation | Logs details when a session is created |
| Session traffic | Logs details of traffic flowing out of the service in a session |
| Request details | Logs request details of users who have requested for a connection |
| Session termination | Logs details when a session is terminated |
| License violations | Logs details if any license violations occur during a session |
| Debug | Logs details of any bugs that occur in a session |
| Configuration events | Log files are created when the following configuration events occur |

| Field Name | Description |
|-------------------------------|---|
| Service start / stop | Log details when a service is started or stopped |
| Configuration changes | Logs details when changes in the service configuration are done |
| Errors Logs | Details of errors during configuration events |
| Authorization Failures | Failure Log details when authorizations by users fail. |

Index

- A**
- Access list, 31
 - Access To, 31
 - Access User, 31
 - Action Button, 15
 - Add, 28
 - Add New POP3 Proxy Service, 33
 - Add New SMTP Proxy Service, 21
 - Alias, 25
 - Allow Relaying, 24
 - Appendix, 48
 - Audience, 6
 - Authentication, 40
- B**
- Bytes Received, 19
 - Bytes Sent, 19
- C**
- Check Box, 15
 - Client IP, 19
 - Companies, 2
 - Connection, 40
 - Contact Us, 8
 - Copy, 30
 - Copyright Notice, 2**
 - Copyright Notice:, 2
- D**
- Details, 19
 - Displays IP, 19
- E**
- Email IDs, 25
 - Enter IP, 22
- F**
- Figure 4.1 General Settings, 22
 - Figure 4.4., 25
 - Figure 5.1 General POP3 Proxy Settings, 33
 - Forward, 30
- G**
- General, 22
- H**
- Hardware Requirements, 11
- I**
- IDs, 28
 - Incoming, 24
 - Installation Process, 11
 - IP, 19
 - bind, 23
- L**
- Launch ProxyGate tasks, 16
 - License Information, 20
 - List of Figures, 3
 - Local Mail Domains, 24
- M**
- Manual Start, 22
 - mechanical, 2
- N**
- New Service, 21, 33
 - Non Proxy Request, 41
- O**
- Outbound Server, 22
- P**
- Pipe, 41
 - POP3 Proxy Service, 19, 33, 34
 - POP3 Servers, 13
 - Port Redirect Service, 42
 - Post Installation Configuration, 13
 - Prerequisites for Installation, 11
 - Proxy Server, 23
 - ProxyGate, 6, 11, 18, 19
 - ProxyGate Admin, 11, 18
 - ProxyGate Admin Details, 19
 - ProxyGate Tasks, 16
 - ProxyGateAdmin, 11
- R**
- Radio Button, 15
 - Recipient, 28
 - Recipient's, 25
 - RemotePort, 19
 - Routing, 28
- S**
- Screen
 - ProxyGate, 19
 - Screen Components, 15
 - Select autorun icon, 11
 - Select Finish, 11
 - Sender's, 30
 - Server IP, 19
 - Service Name, 15, 22, 34
 - Service Port, 22
 - Service Startup, 22
 - Services Frame, 19
 - Sessions, 37
 - SMTP Proxy Service, 19, 21
 - Socks, 40
 - Software and Hardware Requirements, 11
 - Spam., 24
 - Specify Interface, 23
 - Start Time, 19
 - Start/stop, 19, 34
 - Stop, 34
 - Substitute Domains, 28
- T**
- Tab Page, 15
 - Table of Contents, 3
 - Through Cascaded Proxy, 40
 - Timeout, 37
 - Typographical Conventions, 6
- U**
- User, 1
 - User Auth, 40
 - User Interface, 14
 - User Name, 40
- V**
- View, 20