



**This document provides information to install
X-Spam for Microsoft Exchange Server 2000-2003**

**X-Spam for Microsoft Exchange Server 2000-2003
Installation Guide**

Copy Right Notice

Installation Guide of X-Spam for Microsoft Exchange Server 2000-2003

The software described in this book is furnished under a license agreement and may be used only in accordance with the terms of the agreement.

Document Number : XSMES/23.6.04

Copyright Notice

Copyright (C) 2004. All rights Reserved.

Portions (C) by Kaspersky Labs International Limited.

Any technical documentation that is made available by MicroWorld is the copyrighted work of MicroWorld and is owned by MicroWorld.

NO WARRANTY. The technical documentation is being delivered to you AS-IS and MicroWorld makes no warranty as to its accuracy or use. Any use of the technical documentation or the information contained therein is at the risk of the user.

Documentation may include technical or other inaccuracies or typographical errors. MicroWorld reserves the right to make change without prior notice.

No part of this publication may be copied without the express written permission of MicroWorld.

Trademarks.

MicroWorld, MicroWorld Logo, eScan, eScan logo, MWL, MailScan are trademarks of MicroWorld.

Windows is a registered trademark of Microsoft Corporation; Kaspersky is a registered trademark of Kaspersky Labs.

All product names referenced herein are trademarks or registered trademarks of their respective companies. MicroWorld Software Services Pvt. Ltd. (MicroWorld) disclaims proprietary interest in the marks and names of others. Although MicroWorld makes every effort to ensure that this information is accurate, MicroWorld will not be liable for any errors or omission of facts contained herein. MicroWorld Software Services Pvt. Ltd. reserves the right to modify specifications cited in this document without prior notice.

Companies, names and data used in examples herein are fictitious unless otherwise noted.

No part of this document may be reproduced or transmitted in any form or by any means, electronic or mechanical, for any purpose, without the express written permission of MicroWorld Software Services Pvt. Ltd.

Other product names mentioned in this manual may be trademarks or registered trademarks of their respective companies and are hereby acknowledged.

Technical Support: support@mwti.net

Sales: sales@mwti.net

Printed : MicroWorld

June, 2004

Table of Contents

About MicroWorld	4
ABOUT SPAM	4
ABOUT X-SPAM	4
FEATURES OF X-SPAM	5
TYPOGRAPHICAL CONVENTIONS	5
CONTACT US	6
Installation	7
TOPICS IN INSTALLATION	7
SOFTWARE AND HARDWARE REQUIREMENTS	7
PREREQUISITES FOR INSTALLATION	7
PRE-INSTALLATION CONFIGURATION	8
INSTALLATION PROCESS	11
TO CONFIGURE X-SPAM FOR MICROSOFT EXCHANGE SERVER 2000-2003	15

About MicroWorld

MicroWorld is one of the leading solution providers in the areas of Spam Control, CRM, Content Security and Anti-Virus products for desktops, large corporate networks and MailServers. With its corporate head quarters in New Jersey and development center in Mumbai, India, we offer 24x7 support, through our regional offices and over 10,000 channel partners spread across the globe. This section provides information about XSpam. Details about its features, how to use it; what to do when you have a virus etc is given.

About Spam

Spam or unsolicited/junk mail costs us millions of dollars. It is usually sent by companies or individuals of uncertain origin and solicits readers attention by sending unwanted advertisements or offers using e-mails.

Earlier Spam was a nuisance and all a user had to do was to delete the mail without opening it. But even though the user deletes Spam, it is still delivered by the mail server and valuable bandwidth is lost in storing and relaying it. Nowadays Spam has taken a turn for the worse and could even lead to security issues. Some of the security issues are:

Identity theft. Many e-mail scams are distributed as Spam, directly leading to identity theft and fraud

Viruses. New viruses, worms, and malware, such as Melissa, Love Bug, and MyDoom use Spam techniques to propagate after being triggered by the user.

Combining exploits and Spam. Many Spammers have incorporated malicious code that targets browser, HTML, and Javascript vulnerabilities. For example, on 31-December-2002 a group of hackers in Brazil sent Spam containing a hostile Javascript to millions of users. People that viewed this Spam from Hotmail unknowingly compromised their accounts. It is widely believed that some viruses are designed to assist Spammers. For example, the SoBig worm installed open proxies that were used to relay Spam. As Spam becomes more prevalent, the use of malware and spyware to support Spam is likely to increase.

About X-Spam

X-Spam offers an intelligent solution that allows you to control how Spam is identified and blocked. Many legitimate mails from clients and friends may have subject lines like “Hi, long time no see” or “We enjoyed ourselves” and so on. Ordinary Anti Spam software makes a cursory examination of subject lines and because Spam also have these subjects, falsely identifies genuine or friendly mail as Spam and deletes them.

X-Spam on the other hand uses a combination of regular expressions where each instance of suspect Spam is assigned a score. Only when the score reaches a threshold level, signifying the mail has tested positive for multiple Spam tests is the mail identified as Spam.

Features of X-Spam

Key features of X-Spam are:

- Spam is identified and blocked in the mail server itself. Users need not download Spam, open it and then realize that the mail is Spam. This saves valuable bandwidth.
- Allows you to configure your mail server to optimize X-Spam performance.
- Uses Regular Expressions that are sets of rules to identify Spam. These regular expressions can be used singly or in a series. Each has a score associated with it. When mails are tested for Spam, they must test positive for a rule and the score is added to the total. Only when the total reaches a threshold value is the mail identified as Spam.
- X-Spam allows you to create customized rules or regular expressions to refine Spam testing
- The regular expressions can be used in a combination to test mails
- Mails identified as Spam are automatically forwarded to a Spam folder and isolated

Typographical Conventions

The following typographical conventions are used in this guide.

This	Represents
Bold	A Menu or a menu option. When enclosed in ‘ ‘, the name is as displayed in the screen.
‘ ‘	A long name is denoted by the first few words and It is enclosed in ‘ ‘.
SMALL CAPS	Buttons on dialog boxes/child windows.
<i>Italics</i>	Entry Fields in dialog boxes/child windows.
Type	Information you need to enter.
Hyperlink	Is a hyperlink. Click to access related topics.
Tasks	Represents a key task of feature.

- When you have to navigate between menus the following convention is used: menu > menu >...

E.g.. SMTP Spam Config > General Configuration > SMTP Settings. Means: in SMTP Spam Config, **select** (click) General Configuration and **choose** (click) SMTP Settings.

Contact Us

We offer 24x7 support to our customers through e-mail, telephone and Chat.

Chat Support

- Chat with our support team at 'escanchat' using: AOL; MSN or Yahoo messenger service.

E-Mail Support

- If you have any queries about our products or have suggestions and comments about this guide, please send them to support@mwti.net:

Head Office: MicroWorld Technologies Inc. 33045 Hamilton Court East, Suite 105 Farmington Hills, MI 48334-3385, USA. Tel: (248) 848 9081/ 848 9084 Fax: (248) 848 9085	Asia Pacific: MicroWorld Software Services Pvt. Ltd. Plot No 80, Road 15, MIDC, Marol, Andheri (E), Mumbai, INDIA.. Tel (91) - 22- 28265701 - 05 Fax (91) - 22-28304750
---	--

For sales enquiry, e-mail: sales@mwti.net

Installation

This chapter provides information about the software and hardware requirements of your machine for using our products and provides step-by-step instructions on installation.

Topics in Installation

This chapter provides details about the following topics:

- [Software and Hardware Requirements](#)
- [Prerequisites for Installation](#)
- [Pre-installation Configuration](#)
- [Installation Process](#)
- [To Configure X-Spam](#)

Software and Hardware Requirements

Intel Pentium or compatible 133 MHz or higher, 128 MB RAM, 50 MB free disk space, CD ROM Drive, VGA Monitor.

Prerequisites for Installation

Before installing the software ensure that the following are done:

- Latest Operating System version and Service Pack are installed.
- Ensure that Microsoft Exchange Server 2000-2003 is installed and configured.
- Check for the largest drive/partition and install X-Spam on that drive/partition.
- Primary Domain name of the Mail Server (normally this is read automatically from the Mail Server Configuration when you install MailScan).
- Administrator or Postmaster ID or e-mail Address.

Pre-Installation Configuration

Before installing X-Spam, you need to confirm if your Exchange Server is configured properly. This section provides a checklist for pre-installation configuration.

- Click Start > Programs > Microsoft Exchange > System Manager
- Expand the folder Servers, as shown in Figure 1.1.

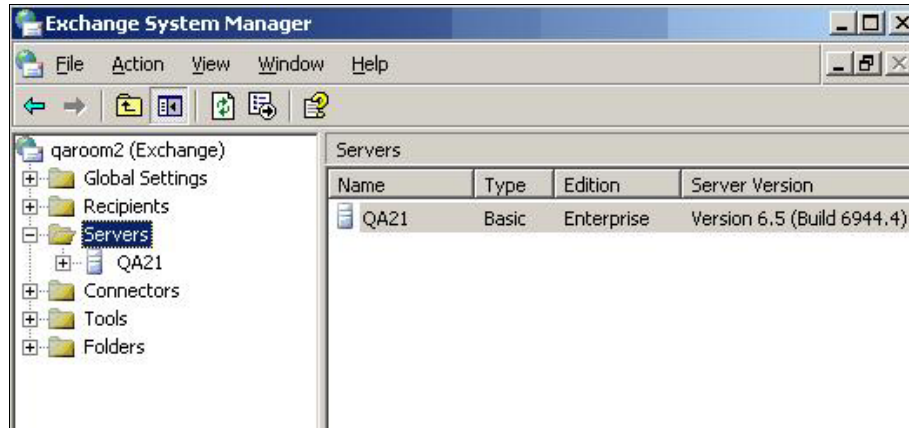


Figure 1.1 Open Microsoft Exchange System Manager

- Right click Servers and select Properties in the popup menu.

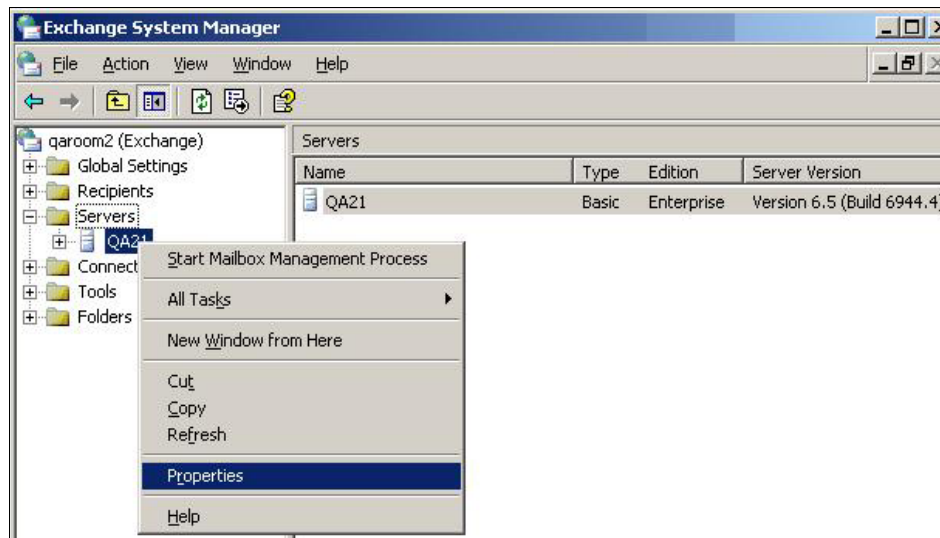
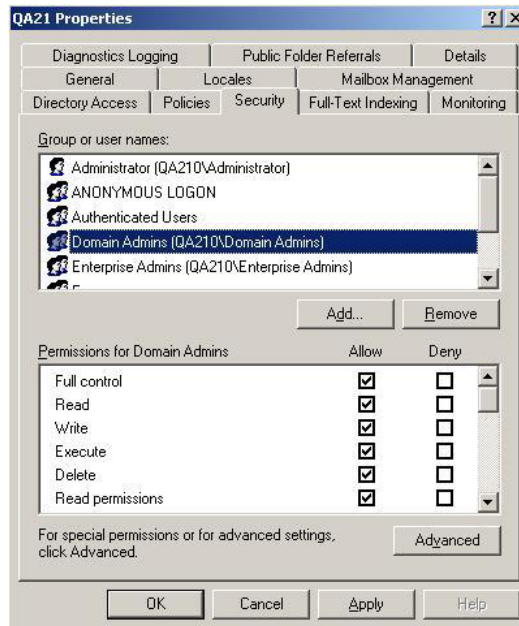
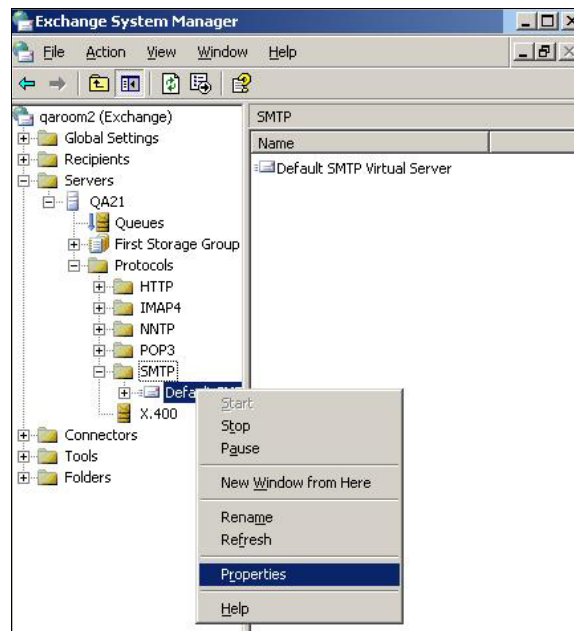


Figure 1.2 Open Microsoft Exchange System Manager

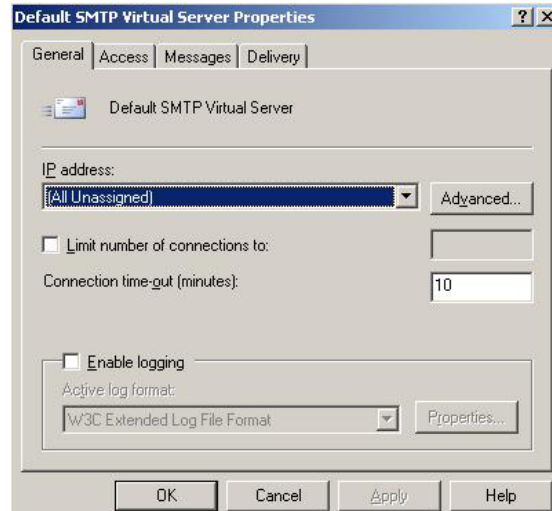
- Click **Security** tab. In the frame 'Group or user names' select **Domain Admins**.
- In the frame 'Permissions for Domains' give full control for the administrators



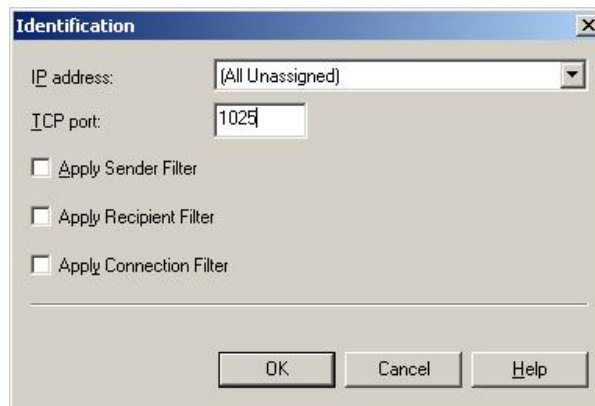
- In Figure 1.2, click Protocols > SMTP and right click Default SMTP Virtual Server and select Properties



- The Default SMTP Virtual Server Properties box is displayed. Select the **General** tab and click **Advanced** button.



- In the **Advanced** dialog box that is displayed, click **Edit**.
- The Identification dialog box is displayed. Enter the unused port number (other than 25) that Microsoft Exchange Server will listen for mails from X-Spam. You will need to enter the same port number in [Step 5](#) of the installation.



Installation Process

Installation is very simple, a point and click operation and done using the built-in install wizard. A user-friendly interface prompts you and presents a range of choices. Instructions are displayed in the screens that give you specific information. To abort installation, select “Cancel” in any of the screen. This section gives the step-by-step installation process.

- If the software is sent to you in a CD, load the CD in the player and open the CD ROM directory.
- If the software is downloaded from the MicroWorld's website, open the file in explorer and double-click on it to run.
- Select “autorun” icon. Screen in Figure 1.3 is displayed. This is the start up screen for installing the application.



Figure 1.3 Install – Opening Screen

Step 1

- In Figure 1.3, select **Next**, to begin installation. Screen in Figure 1.4 is displayed.
- This screen shows the license agreement between you and MicroWorld. Read the instructions and select **Yes** to accept the terms. Select **No** if you do not accept the terms in which case the installation process is aborted.

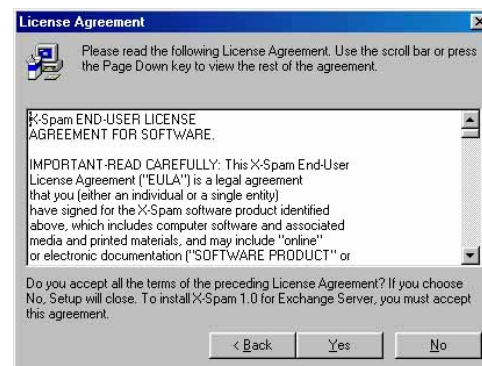


Figure 1.4 License Agreement

Step 2

- If you select **Yes**, screen in Figure 1.5 is displayed.
- Select the directory to install the application. The default path is displayed. To change the location, browse your PC and select the directory.
- Select **Next**.



Figure 1.5 Select Destination Directory

Step 3

- Screen in Figure 1.6 is displayed.
- The application is ready to be installed. Select **Install**.



Figure 1.6 Begin Installation

Step 4

- The software is extracted to a temporary directory.

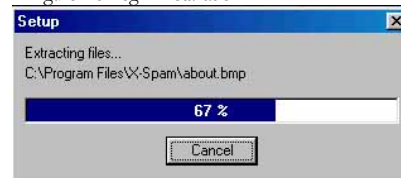


Figure 1.7 Installation progress bar

Step 5

- You need to enter details like your fully qualified primary domain name, administrator email ID, email ID for license notifications, mail server IP and port (the one specified for Exchange Server SMTP server in the pre-installation configuration) and the e-mail ID for license notification.

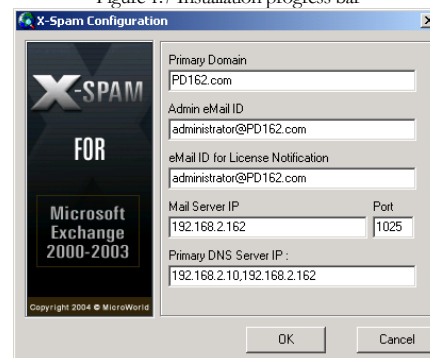


Figure 1.8 Domain details

Step 6

- The Administrator password is required by X-Spam for Exchange 2000-2003 to access mails passing through the server



Figure 1.9 Domain details

Step 7

- If the default Outlook profile is not set to the administrator mailbox, then the installation will provide you with the option to select another profile from the drop-down list. In this case, Step 11 is displayed next.



Figure 1.10 Choose Profile

Step 8

- If the profile is not setup correctly, then you will need to set up the administrators profile. Select Microsoft Exchange Server and click **Next**.



Figure 1.11 Choose Information Service

Step 9

- Enter the server name and click **Next**.



Figure 1.12 Enter Exchange Server name

Step 10

- Select the appropriate radio button and click **Next**.



Figure 1.13 Select computer type

Step 11

- Click **Finish** to complete the outlook administrator profile setup



Figure 1.14 Outlook configured

Step 12

- Important instructions to run X-Spam are given. Read them and click **Next**.

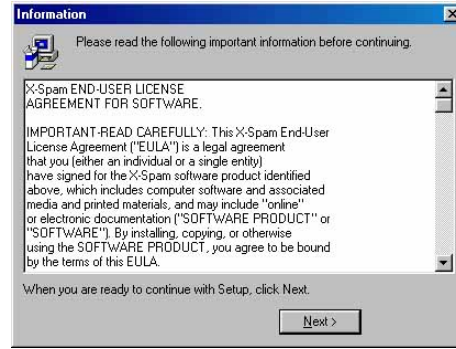


Figure 1.15 Important Instructions

Step 13

- Your evaluation license is updated.




Figure 1.16 Evaluation License Updated.

Step 13

- Installation is over. Click **Finish**.



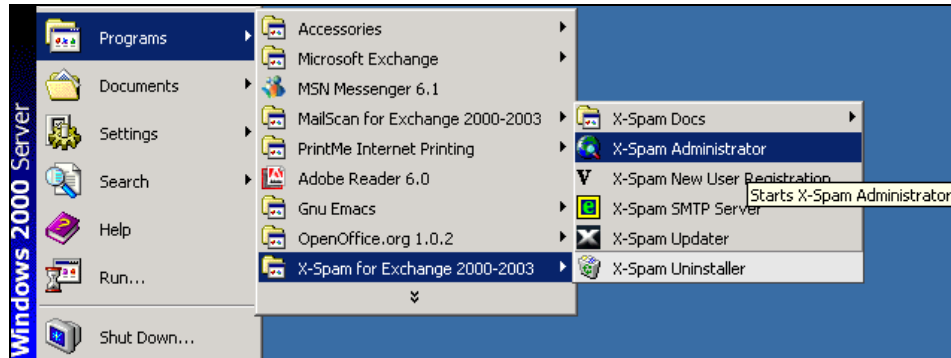
Figure 1.17 Select profile.

- X-Spam for Exchange Server 2000-2003 is successfully installed and has started running in the background.
- The icon  is added to the icon tray.

To configure X-Spam for Microsoft Exchange Server 2000-2003

- You can launch X-Spam for Microsoft Exchange Server 2000-2003 using the path: **Start > Programs > X-Spam for Exchange 2000-2003 > X-Spam Administrator**

The above path is shown in the following figure



X-Spam for Microsoft Exchange Server 2000-2003 is integrated with a powerful on-line context sensitive help. If you want information about any screen or a field, click in the field and press F1 to bring up the help file. In the help file, you can search for content using keywords.

MicroWorld welcomes you to a Spam-free email frontier